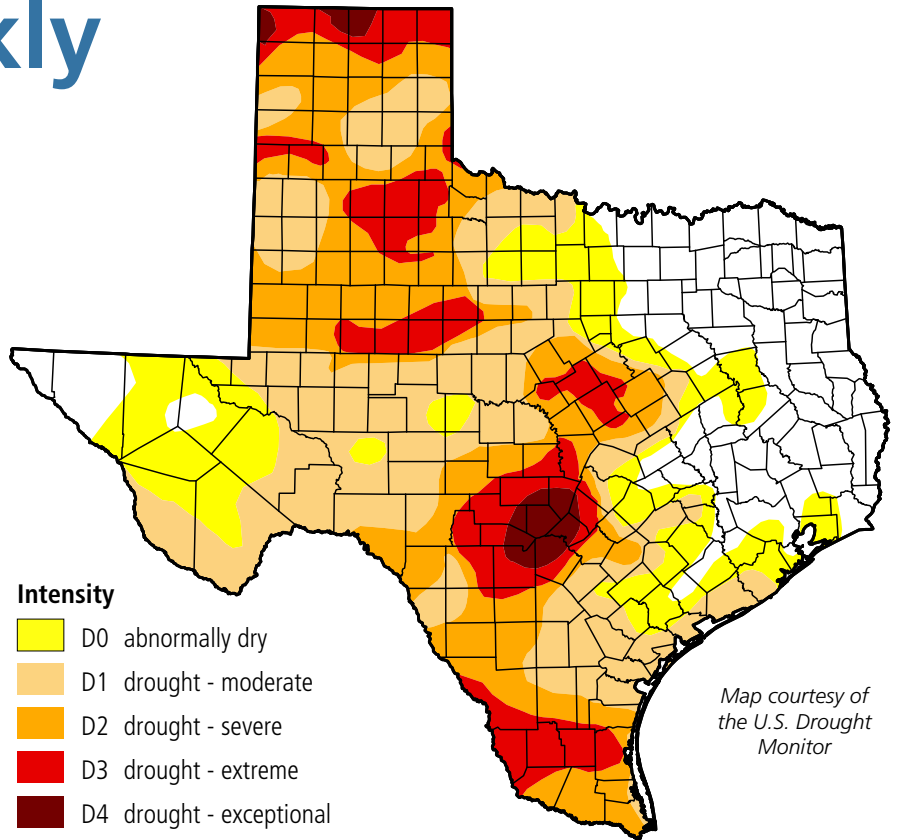


Water Weekly

For the week of 03/13/23

Water conditions

For the fourth consecutive week, the area of the state impacted by drought has expanded. The latest drought monitor map, for conditions as of March 7, shows some contraction of drought in north central Texas but more expansion in the Panhandle and southern, coastal, and west Texas.



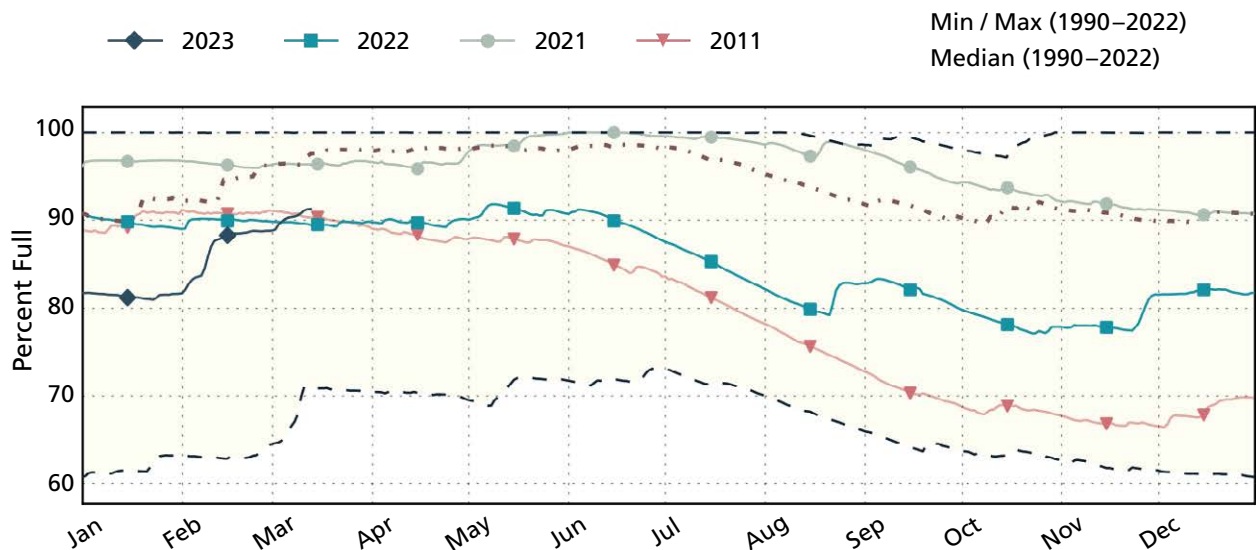
Drought conditions

- ◆ 64% now
- ◆ 62% a week ago
- ◆ 52% three months ago
- ◆ 90% a year ago

Fort Worth reservoir storage

TWDB chart

Fort Worth is on a dividing line between water supply recovery and continued depletion. Systems to the east (Dallas, Tyler, and Texarkana) are at capacity or much improved from a year ago. Systems to the west (Wichita Falls, Abilene, and Lubbock) have less water than a year ago.



Written by Dr. Mark Wentzel — Dr. Mark Wentzel is a hydrologist in the TWDB's Office of Water Science and Conservation.

Bryan McMath, Governmental Relations | bryan.mcmath@twdb.texas.gov | 512-463-7850
Media Relations | MediaRelations@twdb.texas.gov | 512-463-5129